

Extreme Insects

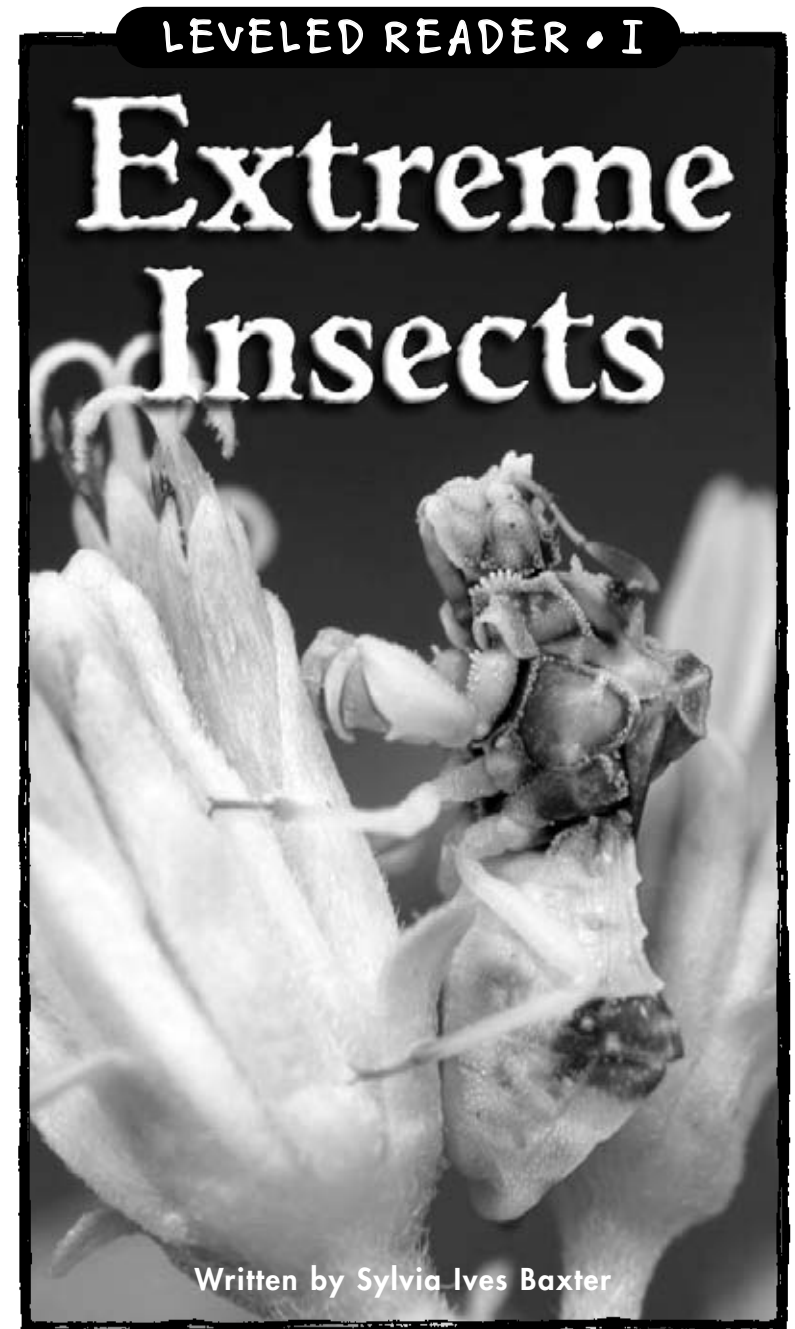
A Reading A-Z Level 1 Leveled Reader

Word Count: 283



**Reading a-z**

Visit www.readinga-z.com
for thousands of books and materials.



www.readinga-z.com

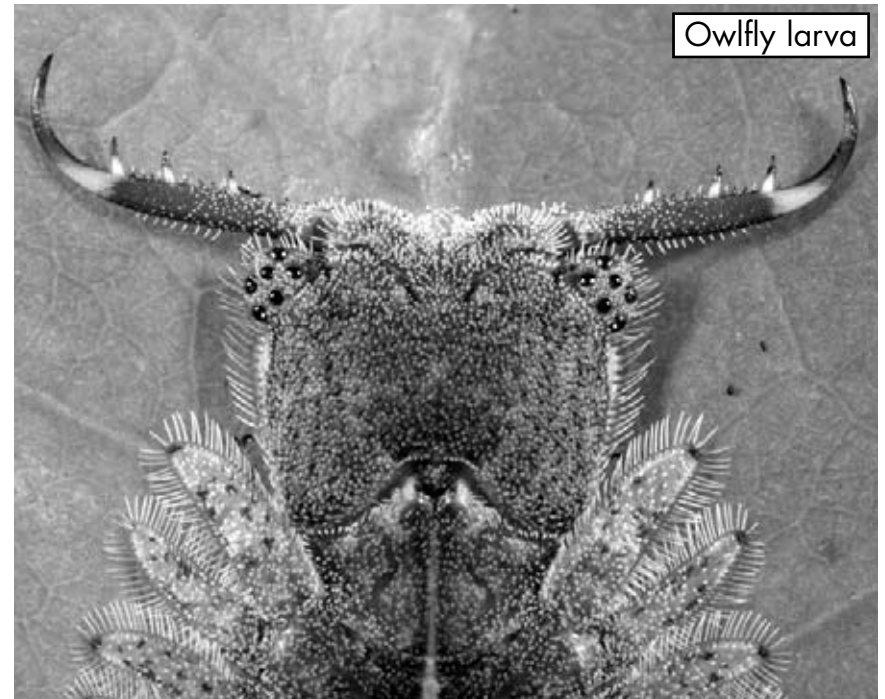
Glossary

- caterpillar** the second stage of the life cycle of a butterfly or moth; the larva stage (p. 10)
- extreme** great or much more than usual (p. 5)
- poison** a substance that can kill animals or plants (p. 13)
- protect** to keep something from being hurt (p. 6)
- traits** qualities that make living things different from one another (p. 5)

Index

- ambush bug, 11, 15
- antlion, 12
- assassin bug, 13
- bombardier beetle, 14
- caterpillar, 10
- cobra snake, 10
- enemies, 4
- Goliath beetle, 6
- larva, 12
- moths, 10
- peanut-head bug, 5
- protect, 6, 15
- titan walking stick, 7
- traits, 5

Extreme Insects



Written by Sylvia Ives Baxter

www.readinga-z.com

Photo Credits:

Front cover, back cover, title page, pages 4, 5, 8, 10, 11, 12, 13, 15:
© Troy Bartlett (www.bugguide.net); page 3: © ArtToday; page 6:
© U.S. Fish and Wildlife; page 9: © Michael & Patricia Fogden/CORBIS;
page 7: © Peter Chew

Front cover: Ambush bug
Back cover: Robber fly eating a meal



Ambush bugs hide near flowers to catch their prey.

Extreme Insects
Level I Leveled Reader
© 2005 Learning Page, Inc.
Written by Sylvia Ives Baxter

ReadingA-Z™
© Learning Page, Inc.

All rights reserved.

Learning Page
1630 E. River Road #121
Tucson, AZ 85718

www.readinga-z.com

Correlation

LEVEL I	
Fountas & Pinnell	I
Reading Recovery	15
DRA	16

Conclusion

Insects have many ways to protect themselves.

Their size, color, and weapons can help them stay alive.

Bombardier beetle



The bombardier beetle's spray keeps enemies away.

Watch out!

This beetle sprays out boiling hot poison when touched.

It stops animals from trying to eat it.

Tarantula

Tarantula Hawk

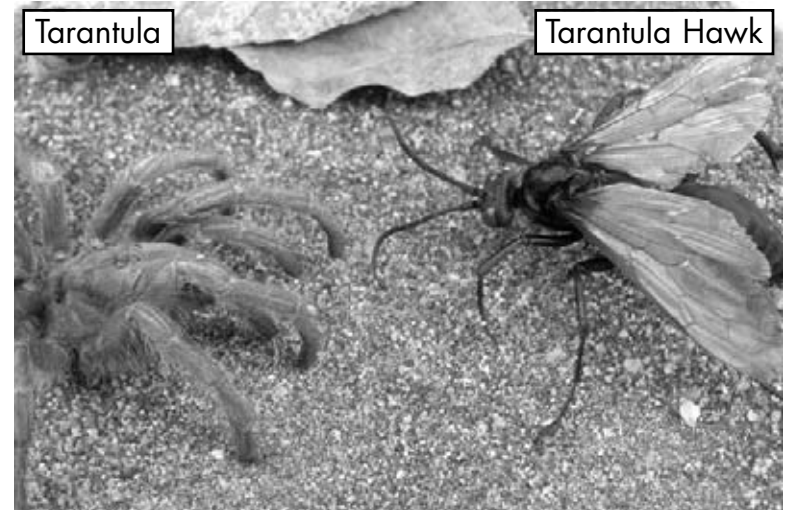


Table of Contents

Introduction	4
Extreme Size	6
Extreme Look-Alikes	8
Extreme Weapons	11
Conclusion	15
Glossary	16
Index	16



Robber fly

A robber fly dines on another insect.

Introduction

Insects are always in danger.
They have many enemies.
They are food for each other
as well as other animals.



Assassin bug

The assassin bug's beak makes it deadly.

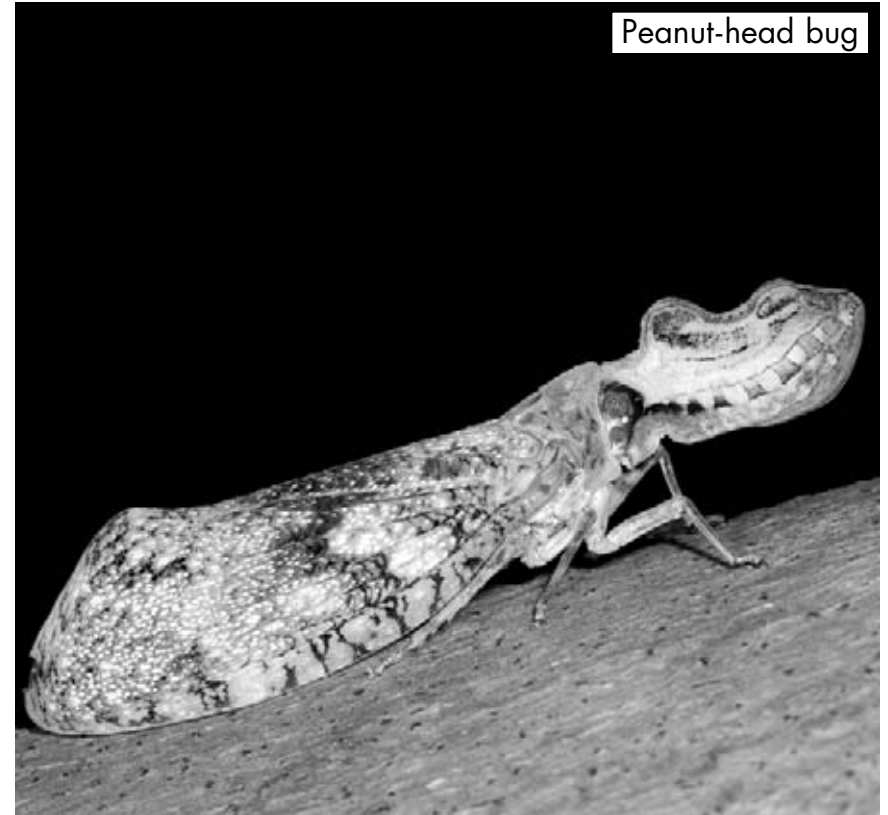
This bug jumps on other insects.
It stabs them with its sharp beak.
It shoots out **poison** that turns their
insides to goo.
Then the bug sucks out the goo.
Slurp!



Antlion larva

An antlion larva traps and eats ants with its extreme jaws.

This insect digs a pit in the sand.
It traps ants in the pit.
Then it grabs an ant in its large,
sharp jaws. Yummy!



Peanut-head bug

A peanut-head bug's looks and its skunk-like spray help keep it alive.

Insects have many **traits** that help them stay alive.

These traits include size, looks, and weapons.

Let's look at some of the **extreme** traits insects have that help them.



Goliath beetle

Goliath beetles are one of the largest insects in the world.

Extreme Size

This beetle can grow as long as a pen.
It can weigh as much as a banana.
Extreme size and a hard cover
protect it from its enemies.



Ambush bug

Ambush bugs have thick front legs to catch bees and flies.

Extreme Weapons

Some insects have extreme
weapons to help them survive.
Some of these insects use their
weapons to get food.
Others use their weapons
to keep from *becoming* food.

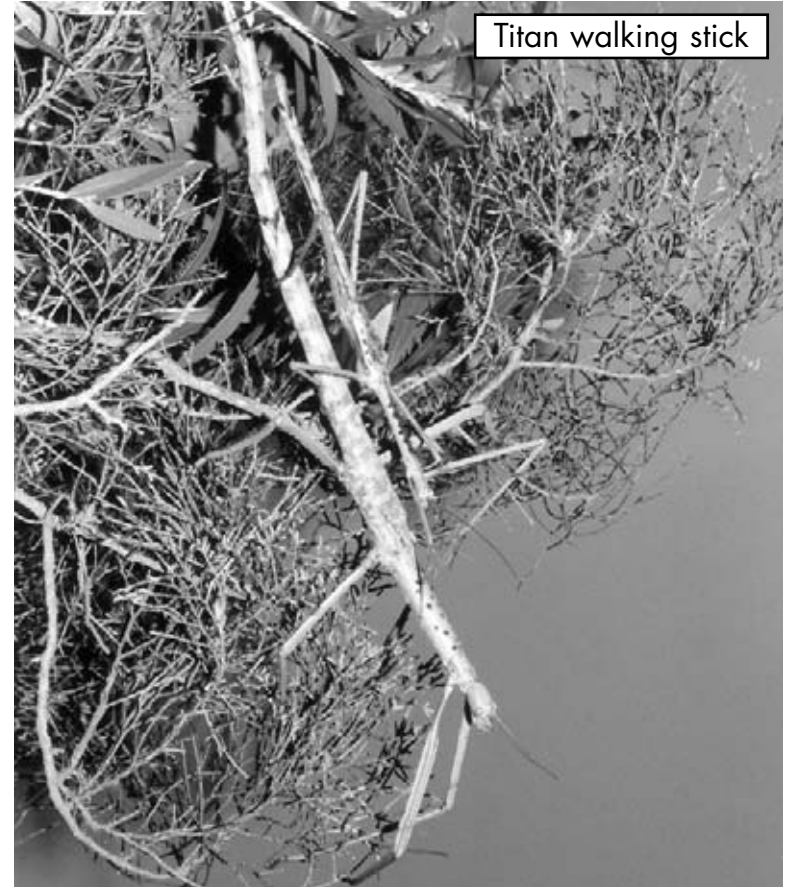
Sphinx moth caterpillar



A Sphinx moth caterpillar can puff up its spots so it looks like a cobra.

There are insects with large fake eyes to scare hungry animals away. When scared, this **caterpillar** can make itself look like a snake.

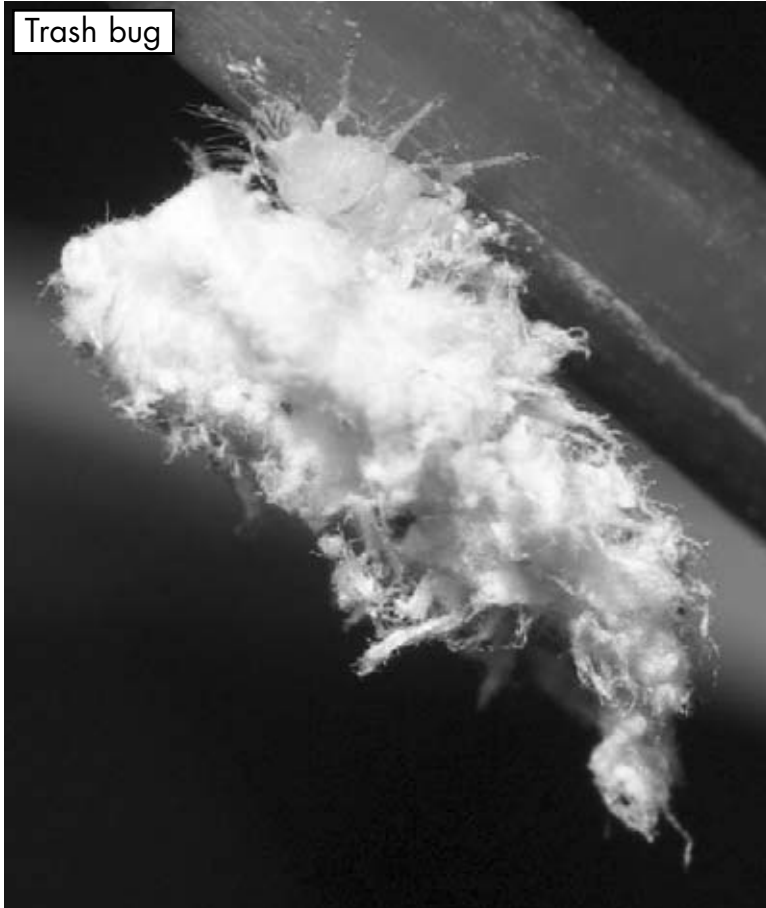
Titan walking stick



A titan walking stick's size and looks help keep it from being eaten.

This insect can grow longer than a new pencil. Its size frightens smaller insects away. Animals don't eat it because they think it is just a big stick.

Trash bug



Trash bugs carry leftovers on their backs to hide from animals that might eat them.

Extreme Look-Alikes

Many insects look like other things. Their looks help them hide from animals that want to eat them.

Katydid



Can you find the insect in this picture?

Some insects look like parts of plants. They can look like leaves, flowers, stems, or even thorns.